



**Metuchen Capacitors, Inc.**  
 Toll Free 1-888-535-1535 • 732-888-9700  
 1-800-679-9959/Fax  
 www.metcaps.com

**“We Offer Quick Solutions to Noise Pollution”**

## Waved Metal Gaskets For D-Subminiature

### MCI's Line of Waved Metal Gaskets for Maximum EMI Filter Performance

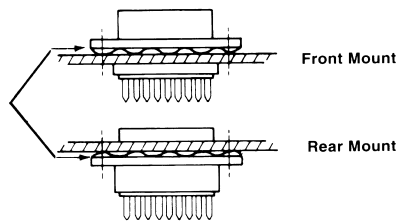
Proper mounting of an EMI filter is critical to achieving optimum filtering performance. For applications requiring very high attenuation, it is necessary to fill the gaps at the mounting surface-to-connector interface. The length of any gap must be short, relative to the wavelength of the signal to be attenuated. MCI supplies a line of “waved” gaskets. This design ensures the maximum “gap length” will not exceed the wave pitch, .200” (5.08 mm), even on surfaces with poor flatness. This ensures maximum filter performance to 1 GHz and beyond.

#### Specifications

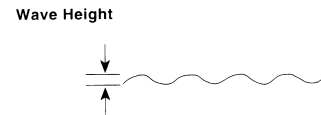
- **Material** . . . . . Beryllium Copper, CA 172 (per QQ-C-533)
- **Finish** . . . . . Electro tin plate, 100 micro inches (per MIL-T-10727)
- **Material Thickness** . . . . . .0005” (.13mm) compressed
- **Wave Height** . . . . . .0030” +.020/-0.015 (.76 +.51/-.38mm)
- **Length increase when flattened** .0008” (.20mm) per inch



#### Waved Metal Grounding / Shielding Gasket (shown in free state)



#### Wave Height



#### How To Order

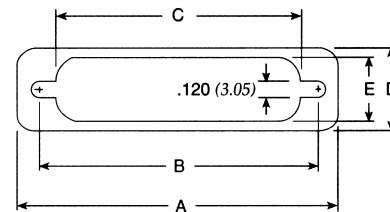
572019-00XXX-70

Select part number by filling in “xxx” (ie: 572019-00xxx-70) referring to the tables at right.

#### Mounting (Front mounted pin or socket connector, rear mounted pin connector)

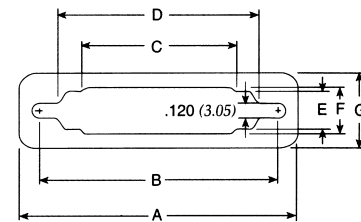
Shell Size	A ±.020” (0.51)	B ±.020” (0.51)	C ±.020” (0.51)	D ±.020” (0.51)	E ±.005” (0.13)	“XXX”
9	1.213 (30.81)	0.984 (24.99)	0.777 (19.74)	0.600 (15.24)	0.440 (11.18)	100
15	1.541 (39.14)	1.312 (33.32)	1.105 (28.07)	0.600 (15.24)	0.440 (11.18)	101
25	2.088 (53.04)	1.852 (47.04)	1.645 (41.78)	0.600 (15.24)	0.400 (11.18)	102
37	2.729 (69.32)	2.500 (63.50)	2.293 (58.24)	0.600 (15.24)	0.440 (11.18)	103
50	2.635 (66.93)	2.406 (61.11)	2.190 (55.63)	.710 (18.03)	.550 (13.97)	104

Dimensions in inches (mm).



#### Mounting (Rear mounted socket connectors only)

Shell Size	A ±.020” (0.51)	B ±.020” (0.51)	C ±.020” (0.51)	D ±.020” (0.51)	E ±.005” (0.13)	F ±.005” (0.13)	G ±.020” (0.51)	“XXX”
9	1.213 (30.81)	0.984 (24.99)	0.450 (11.43)	0.660 (16.76)	0.324 (8.23)	0.360 (9.14)	0.600 (15.24)	105
15	1.541 (39.14)	1.312 (33.32)	0.670 (17.02)	0.988 (25.10)	0.324 (8.23)	0.360 (9.14)	0.600 (15.24)	106
25	2.088 (53.04)	1.852 (47.04)	1.110 (28.19)	1.528 (38.81)	0.324 (8.23)	0.360 (9.14)	0.600 (15.24)	107
37	2.729 (69.32)	2.500 (63.50)	1.550 (39.37)	2.176 (55.27)	0.324 (8.23)	0.360 (9.14)	0.600 (15.24)	108
50	2.635 (66.93)	2.406 (61.11)	1.550 (39.37)	2.082 (52.88)	0.436 (11.07)	0.470 (11.94)	0.710 (18.03)	109



**MCI** Dedicated to Customer Satisfaction Since 1972

**Metuchen Capacitors, Inc.**  
 2139 Highway 35, Suite 2 • Holmdel, NJ 07733

