



Metuchen Capacitors, Inc.
 Toll Free 1-888-535-1535 • 732-888-9700
 1-800-679-9959/Fax
 www.metcaps.com

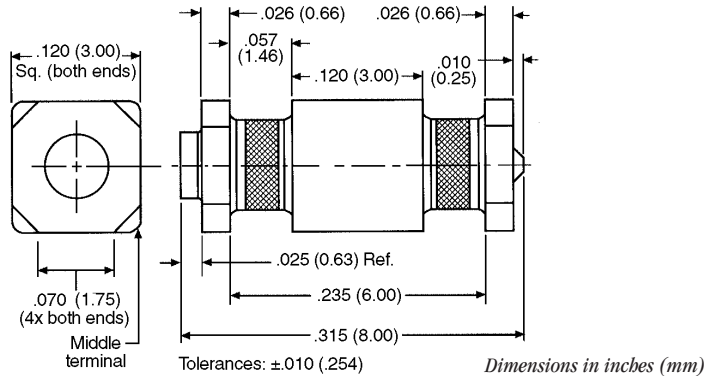
“We Offer Quick Solutions to Noise Pollution”

High Current Surface Mount Filter

Ordering Information

EXAMPLE: PSM4-402Z-20T

The part number shown represents a power surface mount feed-thru filter with a capacitance value of 4000 pF and capacitance tolerance of +80/-20%. The current rating of the part is 20 Amps and the packaging is tape and reel.



How To Order

PSM 4 - 402Z - 20 T

Power Surface Mount — PSM
Circuit Configuration — 4
Capacitance — 402Z
Current Rating — 20
Packaging — T

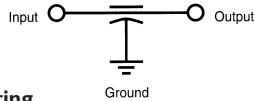
Code	Value*	Tolerance
680M	68 pF	±20%
101M	100 pF	±20%
131P	130 pF	+100/-0%
471P	470 pF	+100/-0%
821M	820 pF	±20%
102M	1000 pF	±20%
152M	1500 pF	±20%
252P	2500 pF	+100/-0%
402Z	4000 pF	+80/-20%
103Z**	.01 uF	+80/-20%

Packaging
 T - Tape and reel packaging (500 per reel)
 B - Bulk packaging

Current Rating**
 02 - 2 Amps 15 - 15 Amps
 05 - 5 Amps 20 - 20 Amps
 10 - 10 Amps

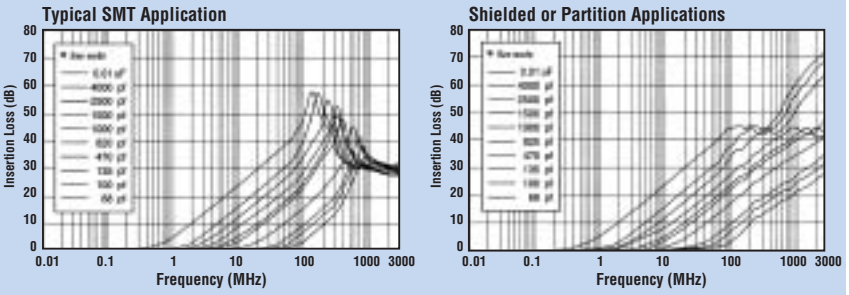
** Maximum current rating for Pi configuration parts is 10 Amps

Feed-thru

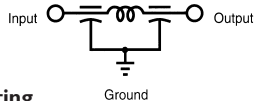


- **Voltage Rating** 200 VDC @ -55°C to +125°C
- **DWV** 700 VDC
- **Current Rating** 2, 5, 10, 15 or 20 Amps
- **Surge Current Capabilities** 100 A for 1 second
- **Insulation Resistance** 1.0 Gohms @ 25°C
- **Dissipation Factor** 4.0% maximum
- **D.C.R.** Max. .0005Ω, typ. .0002Ω

Feed-thru Insertion Loss

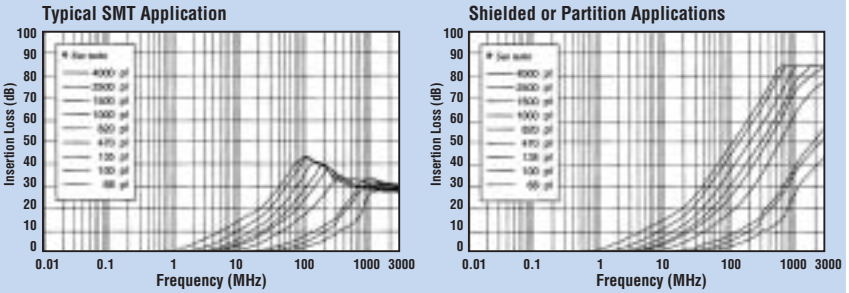


Pi



- **Voltage Rating** 200 VDC @ -55°C to +125°C
- **DWV** 700 VDC
- **Current Rating** 2, 5 or 10 Amps
- **Surge Current Capabilities** 50 A for 1 second
- **Insulation Resistance** 1.0 Gohms @ 25°C
- **Dissipation Factor** 4.0% maximum
- **D.C.R.** Max. .0005Ω, typ. .0002Ω

Pi Insertion Loss



* Capacitance values for insertion loss curves are displayed left to right in the order shown.



Metuchen Capacitors, Inc.
 2139 Highway 35, Suite 2 • Holmdel, NJ 07733

