



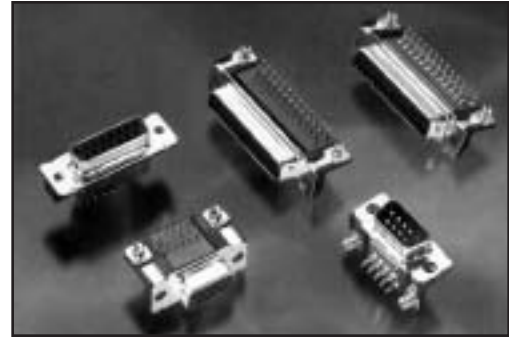
Metuchen Capacitors, Inc.
 Toll Free 1-888-535-1535 • 732-888-9700
 1-800-679-9959/Fax
 www.metcaps.com

“We Offer Quick Solutions to Noise Pollution”

Chip-on-Board Filtered Connectors

These versatile and widely used PCB connectors are an inexpensive filtering method that eliminates the problem of conductive electromagnetic interference (EMI).

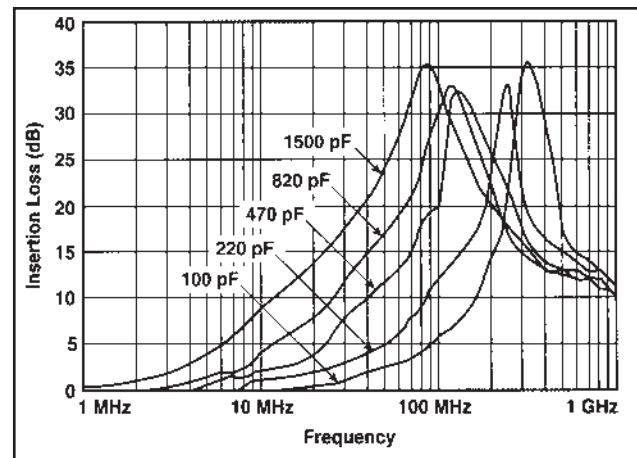
Chip-on-board plug and receptacles are available in 9, 15 and 25 positions. These connectors are “drop-in” replacements for non-filtered subminiature D connectors with matched PCB footprints. Housings are made of high temperature UL-94V-0 rated thermoplastic material. Low cost front metal shells are compatible with full metal-shell threaded insert mating hardware and integral boardlocks to secure posted connectors to the PC board, prior to soldering.



Features

- Offer economical EMI/RFI protection
- Matched PCB footprints mean “Drop-in” replacement for non-filtered connectors
- Chip capacitors on a PC board
- Connectors have industry standard interface
- Connector housing made of UL 94V-0 rated high temperature, thermoplastic
- Connector body is recognized under the Component Program of Underwriters Laboratories, Inc.
- Connector body is certified by the Canadian Standards Association

Typical Insertion Loss



Mechanical Specifications

- Front Shell Steel, tin plated
- Housing 94V-0 rated thermoplastic, black
- Eyelets Brass, tin plated
- Threaded Inserts Zinc
- Boardlocks Copper alloy, tin-lead plated
- Pin Contacts (Posted) Brass, duplex plated as follows:
 .000030 (0.00076) gold on mating end, with entire contact .000050 (0.00127) (min.) nickel underplated.

Performance Specifications

- Current Rating 5 Amps
- Contact Resistance 8 Milliohms max.
- Capacitance 100, 220, 470, 820 and 1,500 pF
 ± 30%
- Dielectric Withstanding Voltage 1,000 VAC min. for 1 minute
- Insulator Resistance 5,000 Megaohms min.



Metuchen Capacitors, Inc.
 2139 Highway 35, Suite 2 • Holmdel, NJ 07733



**AS 9100
 ISO 9001**

Dimensions in inches (mm)



For your convenience we welcome credit card purchases

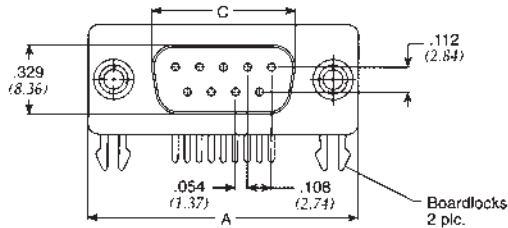


Metuchen Capacitors, Inc.
 Toll Free 1-888-535-1535 • 732-888-9700
 1-800-679-9959/Fax
 www.metcaps.com

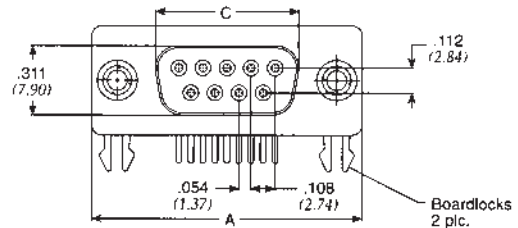
“We Offer Quick Solutions to Noise Pollution”

Chip-on-Board Filtered Connectors

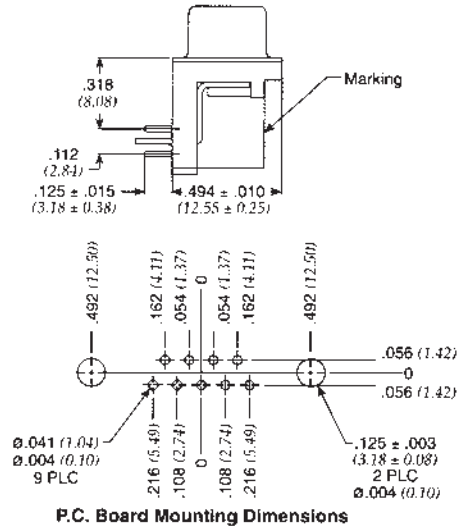
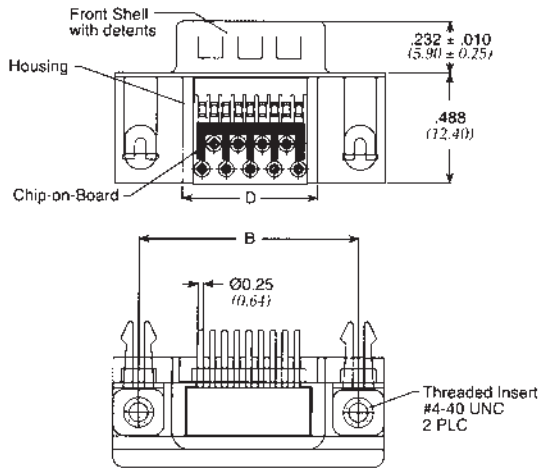
Pin Contact



Socket Contact



Common to Pin and Socket Contact



Pin Contact Part Number	Socket Contact Part Number	Capacitance pF	Shell Size	Number of Positions	A	B	Dimensions C (Pin)	C (Socket)	D
56-102-006	56-104-006	1500	1	9	1.213 ± .015 (30.81 ± 0.38)	.984 (25.00)	.666 ± .010 (16.92 ± 0.25)	.643 ± .010 (16.33 ± 0.25)	.606 (15.40)
56-102-005	56-104-005	820							
56-102-004	56-104-004	470							
56-102-003	56-104-003	220							
56-102-002	56-104-002	100	2	15	1.541 ± .015 (39.14 ± 0.38)	1.312 (33.32)	.994 ± .010 (25.25 ± 0.25)	.971 ± .010 (24.66 ± 0.25)	.929 (23.60)
56-112-006	56-114-006	1500							
56-112-005	56-114-005	820							
56-112-004	56-114-004	470							
56-112-003	56-114-003	220	3	25	2.088 ± .015 (53.04 ± 0.38)	1.852 (47.04)	1.534 ± .010 (38.96 ± 0.25)	1.511 ± .010 (38.38 ± 0.25)	1.476 (37.50)
56-112-002	56-114-002	100							
56-122-006	56-124-006	1500							
56-122-005	56-124-005	820							
56-122-004	56-124-004	470							
56-122-003	56-124-003	220							
56-122-002	56-124-002	100							

MCI Dedicated to Customer Satisfaction Since 1972

Metuchen Capacitors, Inc.
 2139 Highway 35, Suite 2 • Holmdel, NJ 07733



**AS 9100
 ISO 9001**

Dimensions in inches (mm)



For your convenience we welcome credit card purchases